

DIFFICULT ASTHMA PATHWAY

REFERRAL TO DIFFICULT ASTHMA CLINIC

18 + years

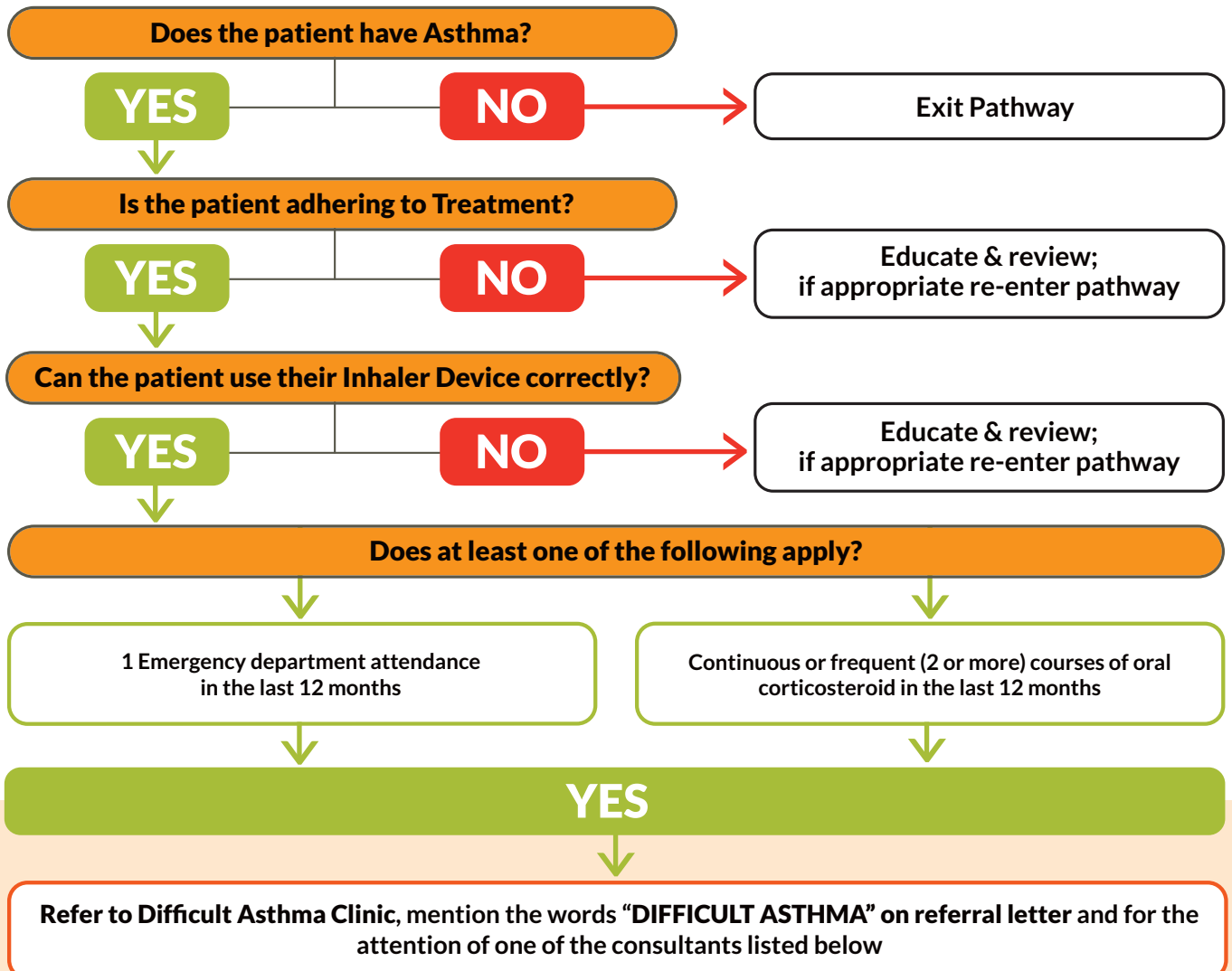
Difficult Asthma Clinics are run at your local hospitals.

BRSAS - Birmingham Regional Severe Asthma Service - has three official spokes in the Black Country
- Russells Hall, New Cross, Sandwell: Birmingham City.

The Black Country Spokes each run regular MDT's for difficult Asthma, and attend monthly regional Difficult Asthma MDT's at Heartlands Hospital. *See option below for Walsall patients

The following points should be considered prior to referring patients to a Difficult Asthma Clinic

Patients currently prescribed medium to high dose ICS or ICS/LABA should follow this referral algorithm ($\geq 800\text{mcg}$ BDP equivalent).



Difficult Asthma leads at the Spokes are:
 Russells Hall, Dudley - Dr Martin Doherty
 New Cross, Wolverhampton - Dr Rachid Berair
 Sandwell : Birmingham City - Dr Adeel Sahal

* Difficult Asthma Lead at Walsall NHS Trust - Dr Matonhodze
 Appropriate referrals will then be directed to the Asthma HUB at Heartlands Hospital (UHBHGS).

Black Country Version 3.2 Jan 2021.

Adapted from

(i) BTS/SIGN Guideline on the management of asthma 2019

(ii) All Wales Adult Asthma Diagnosis and Management Guidelines 2020